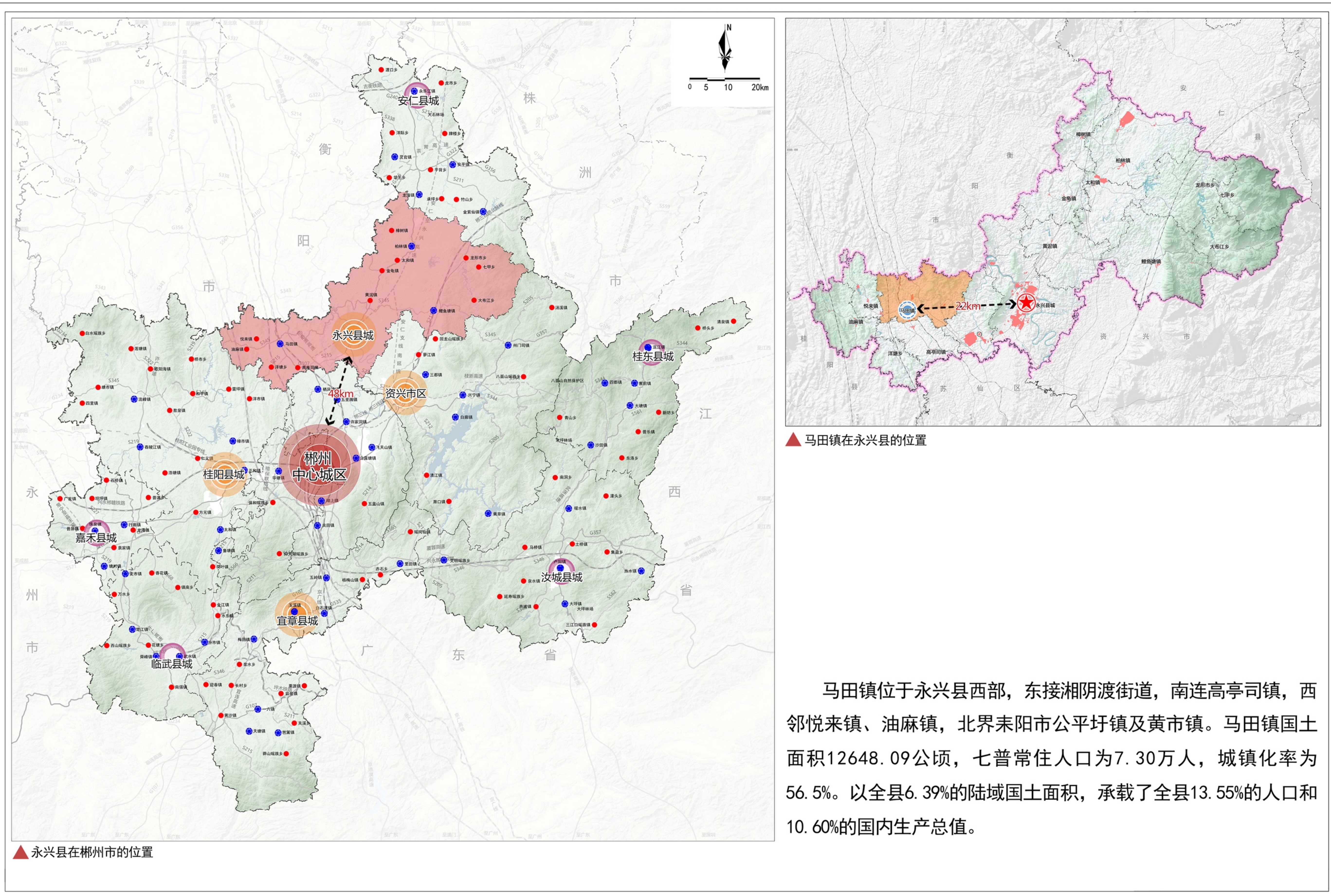
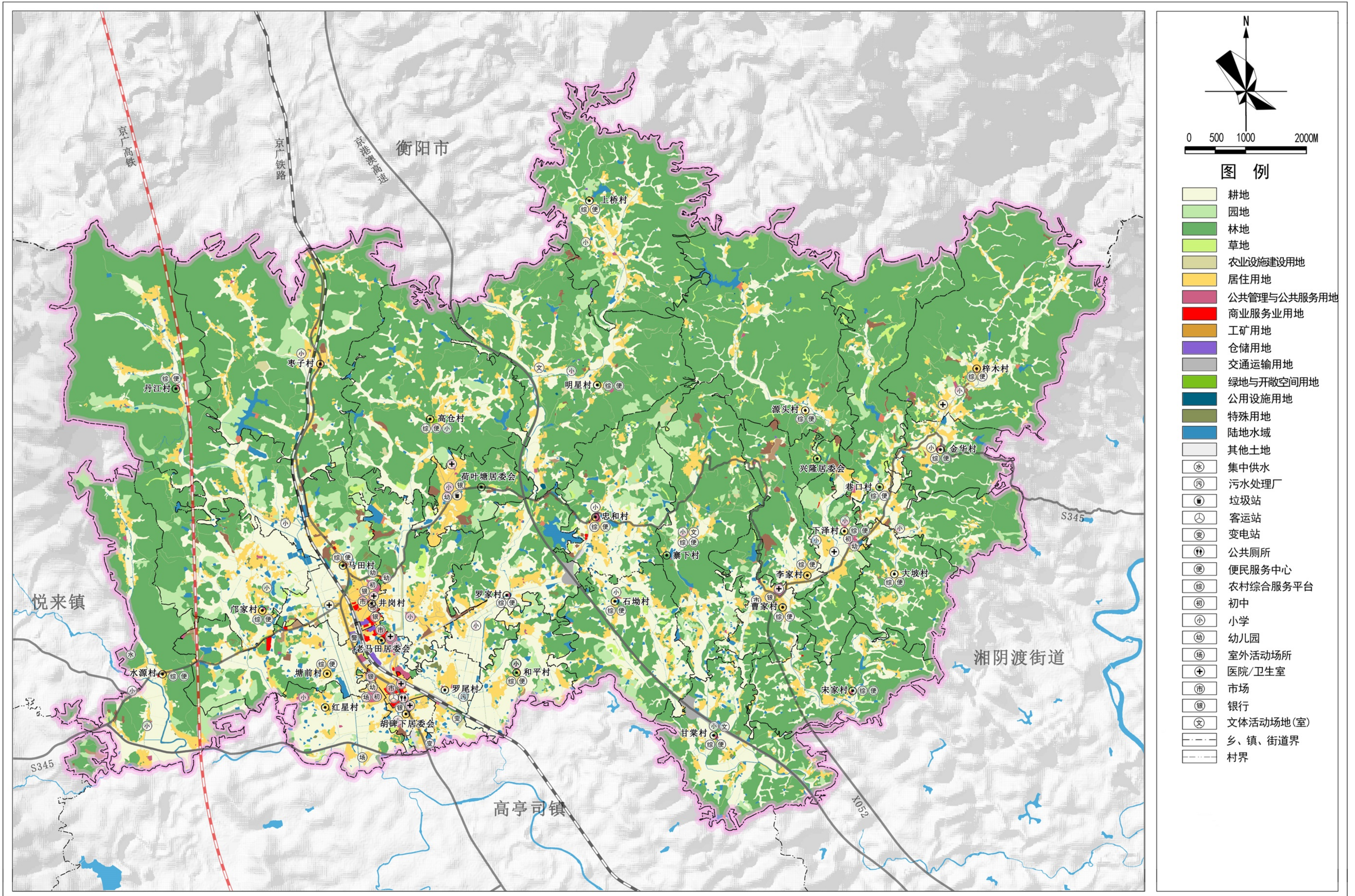
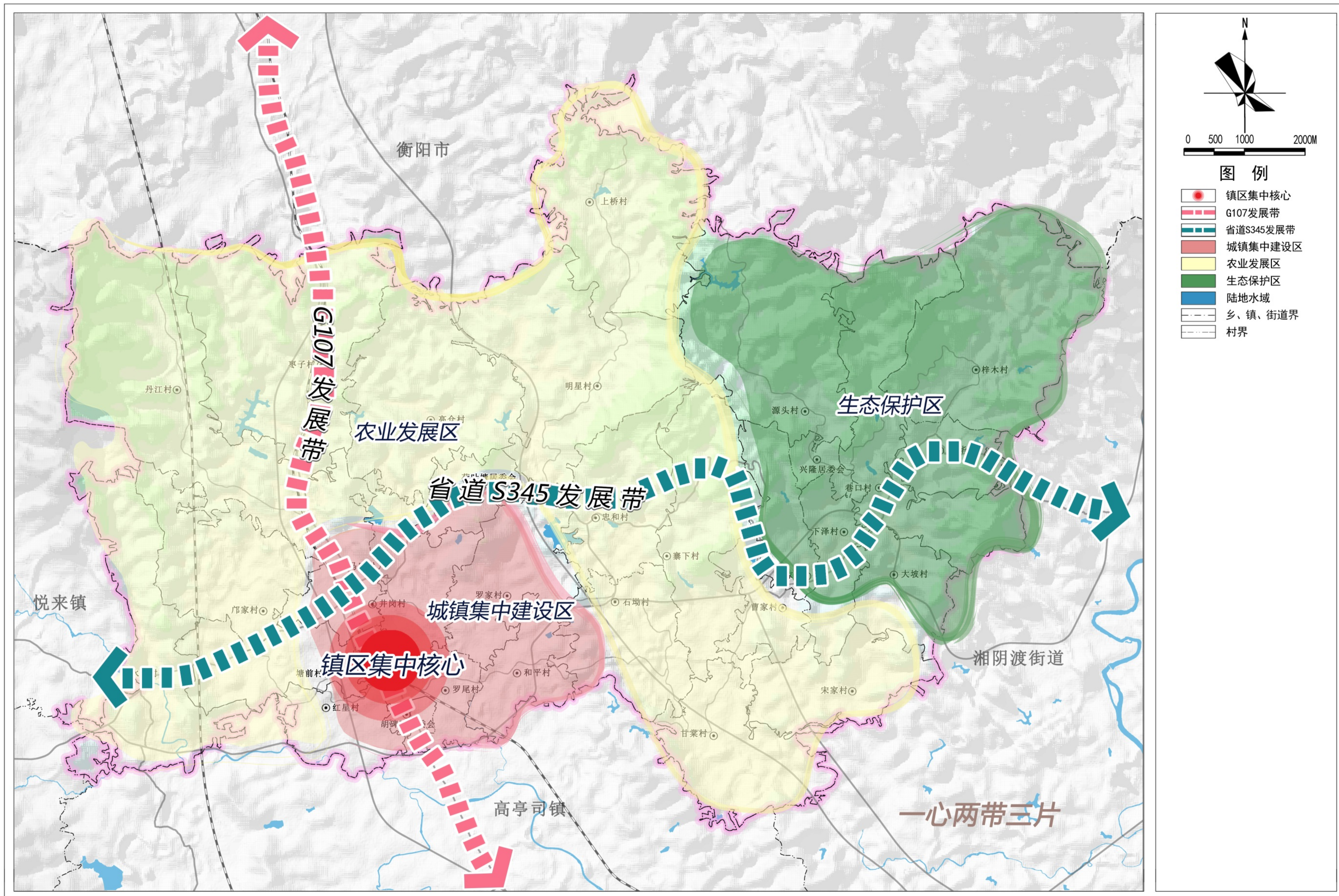


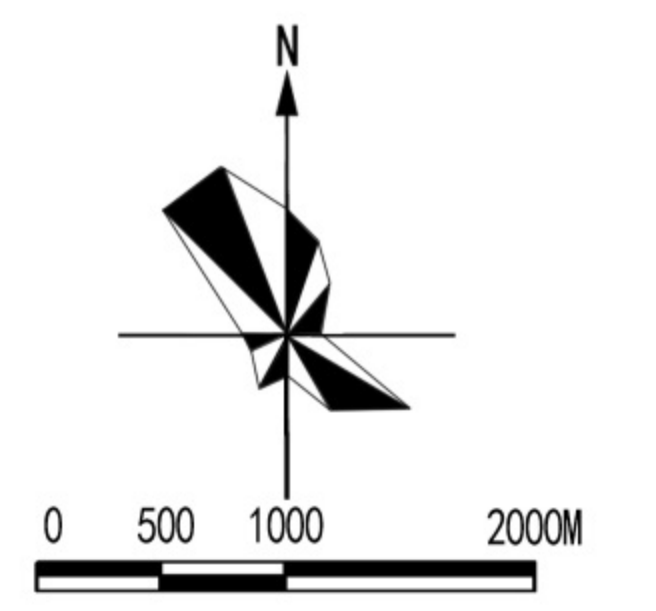
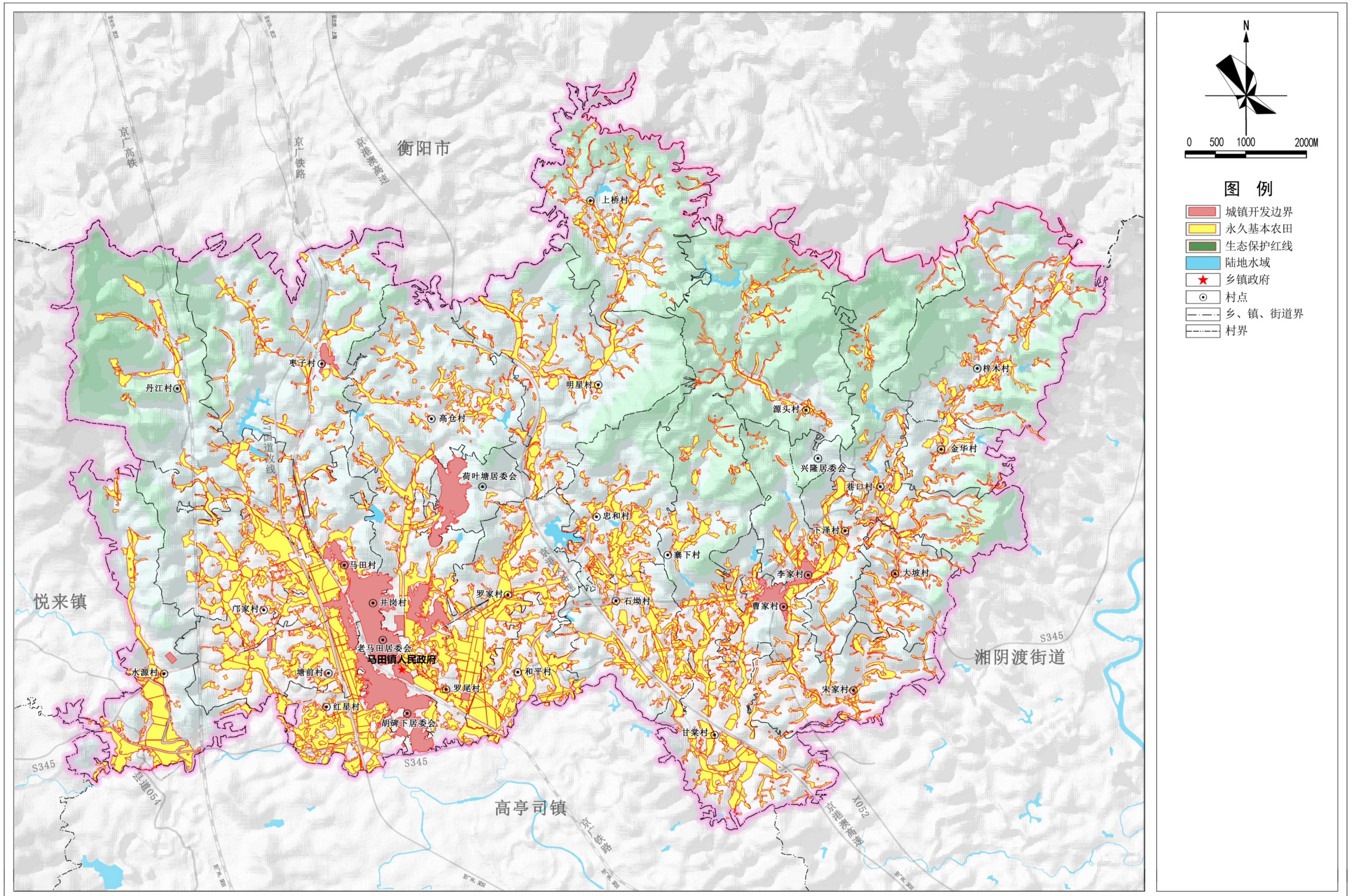
永兴县马田镇国土空间规划（2021-2035年）

图1 区位图



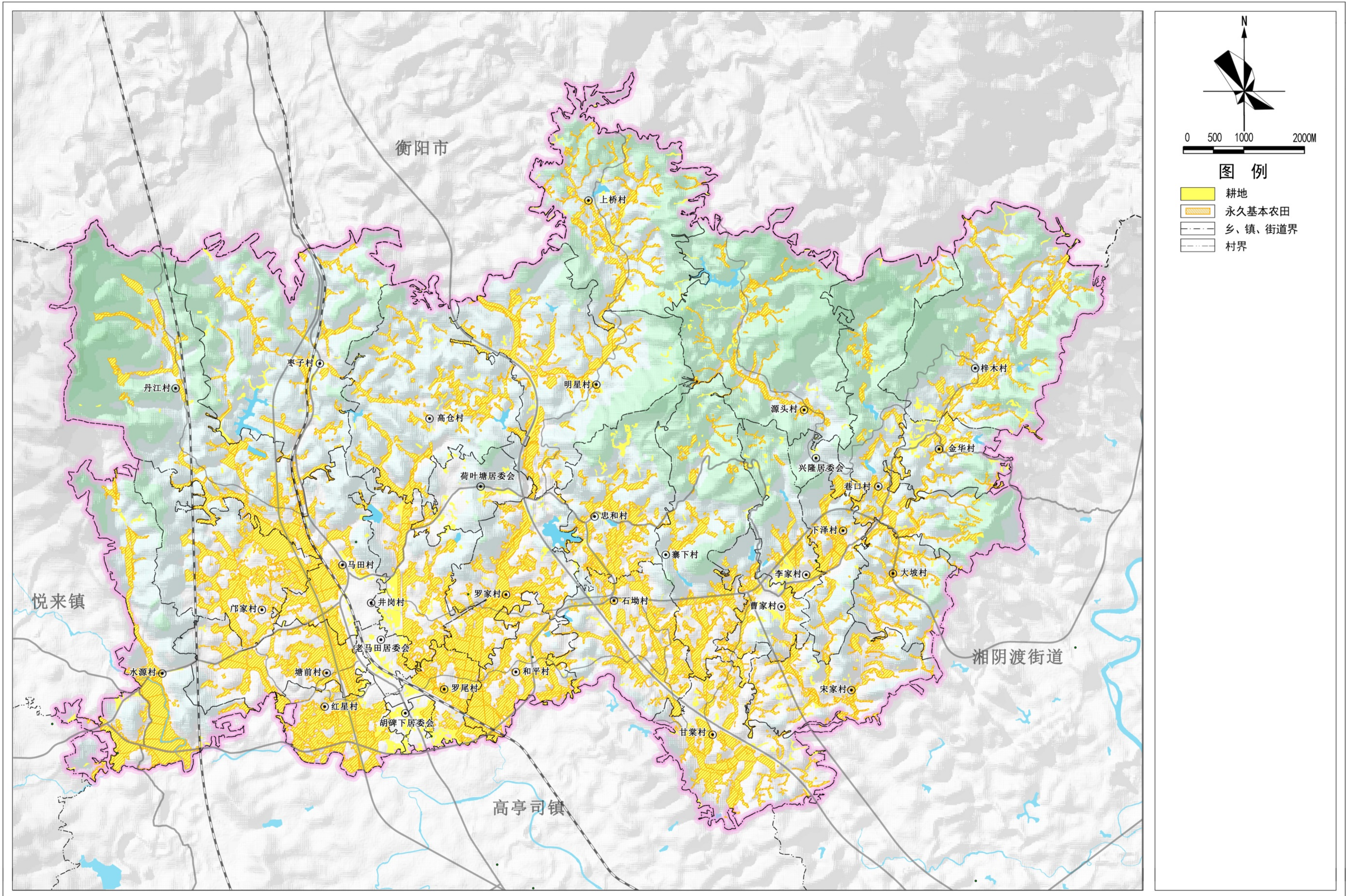


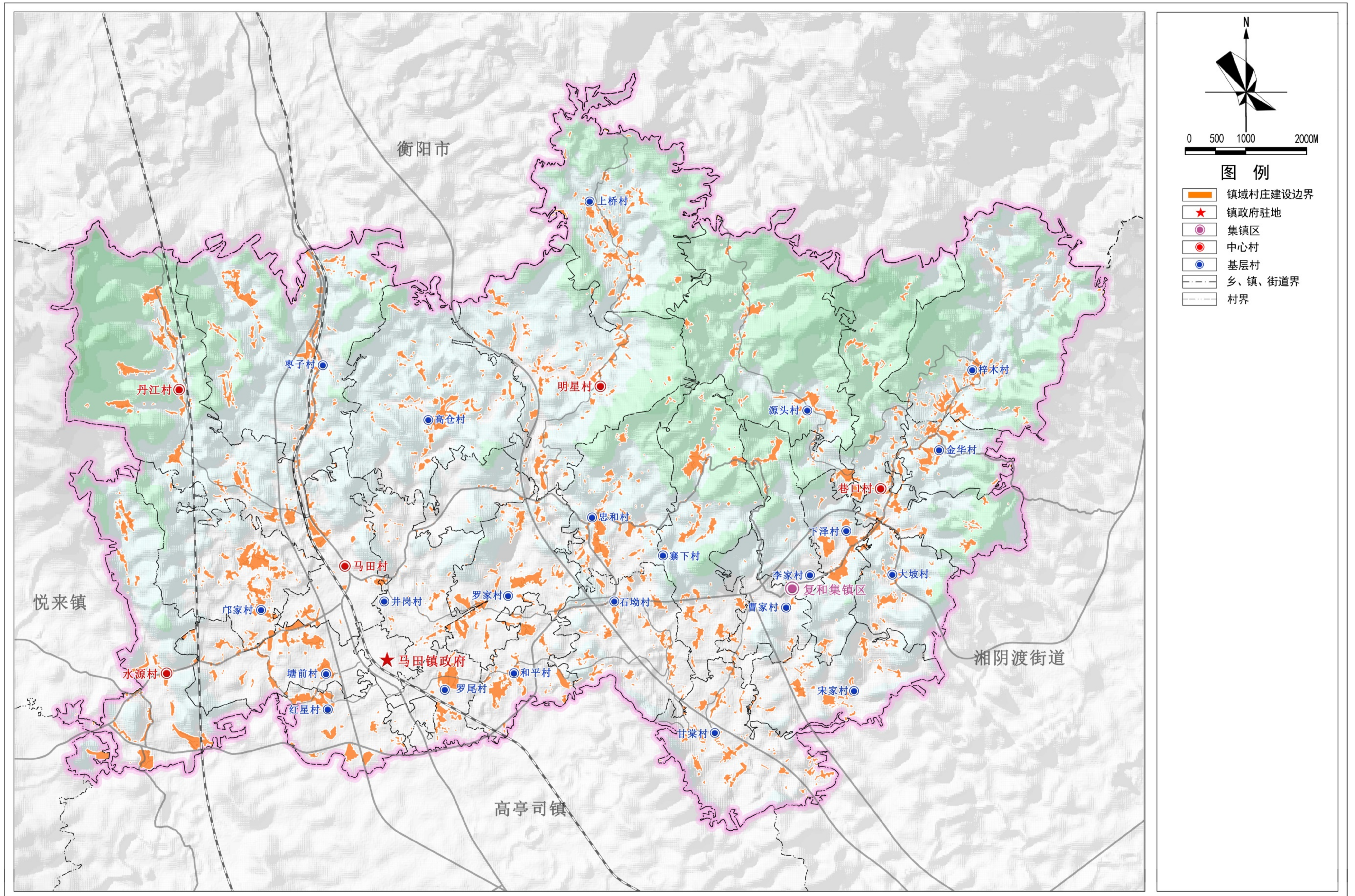


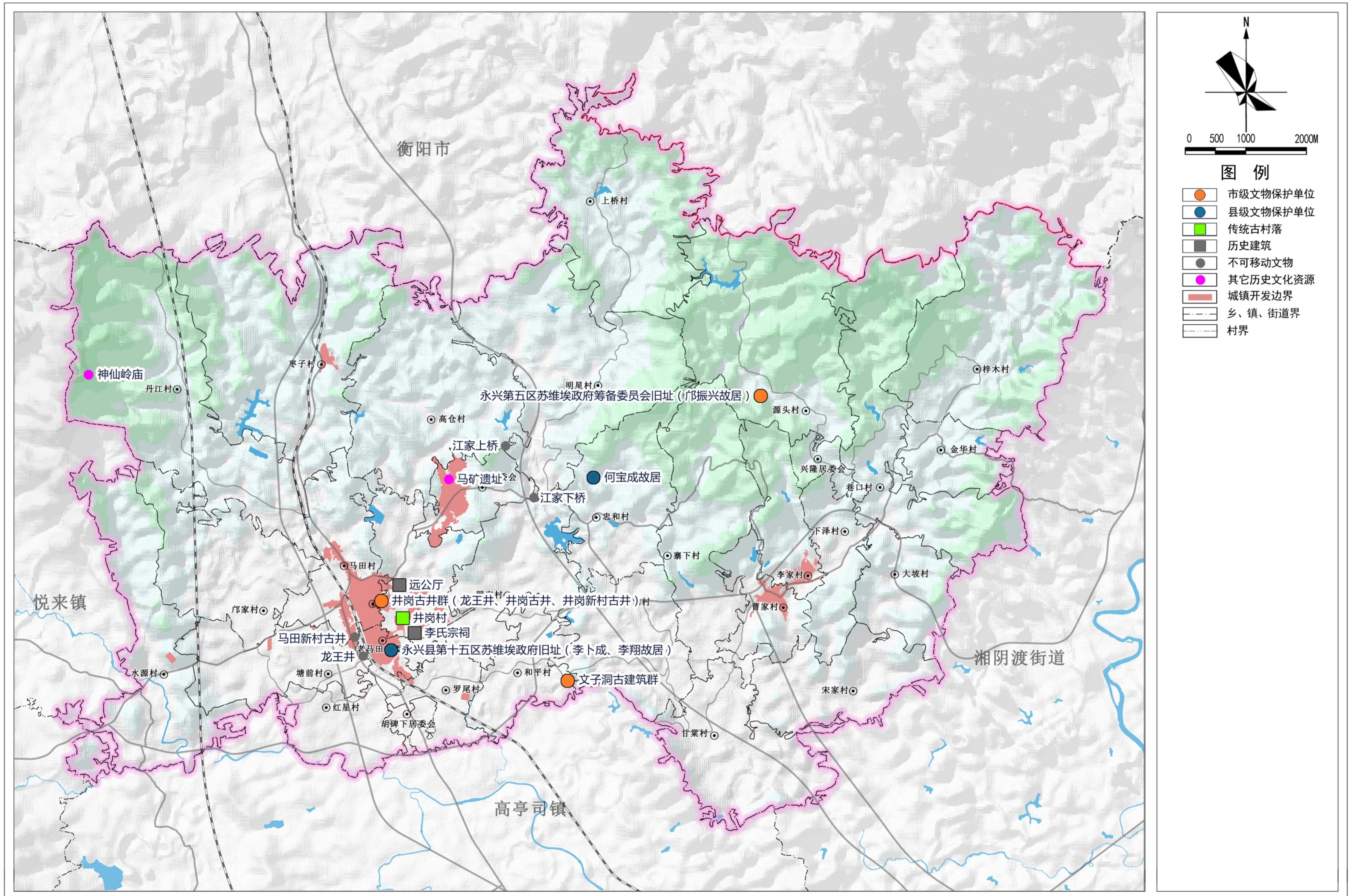


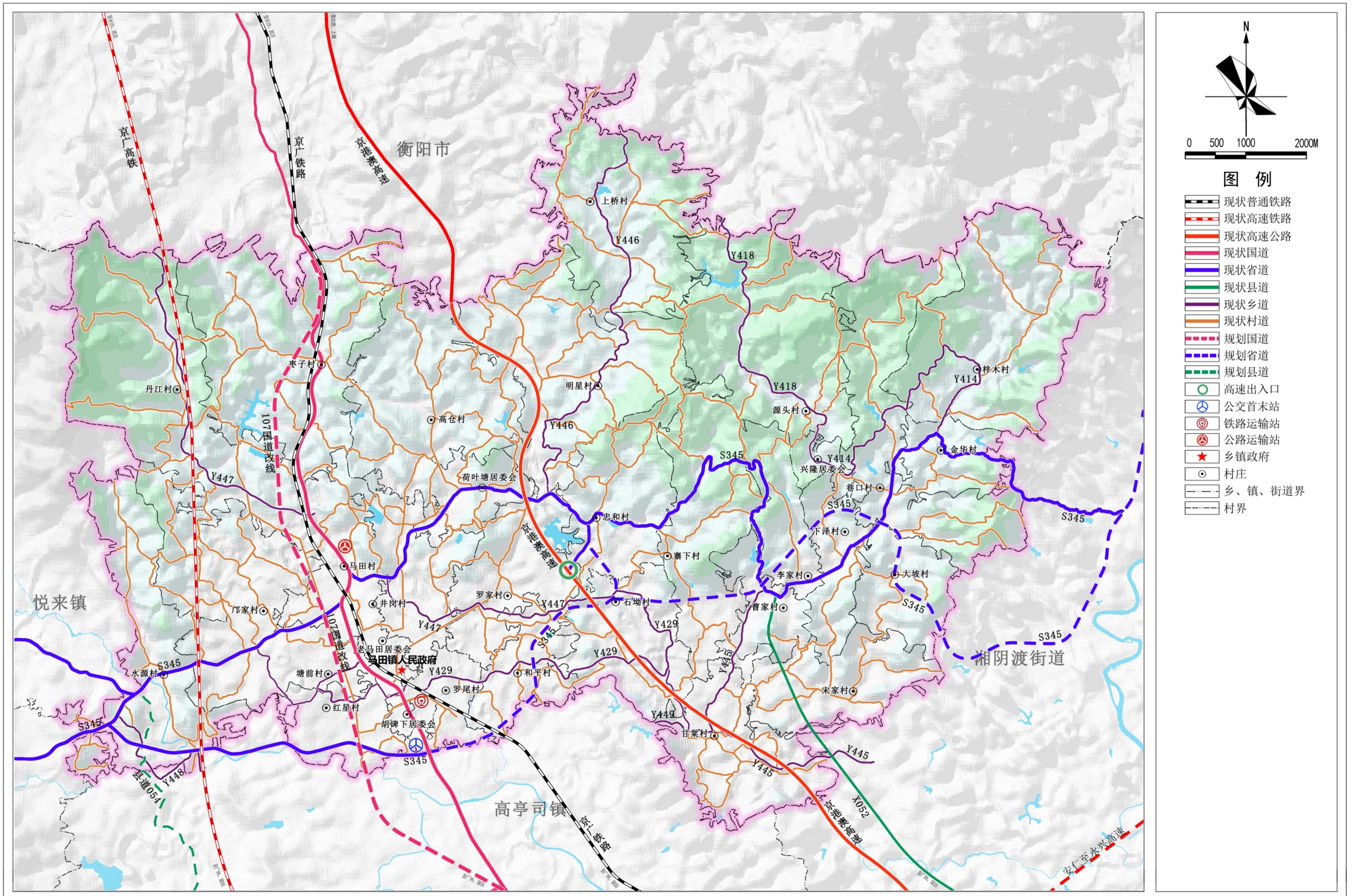
图例

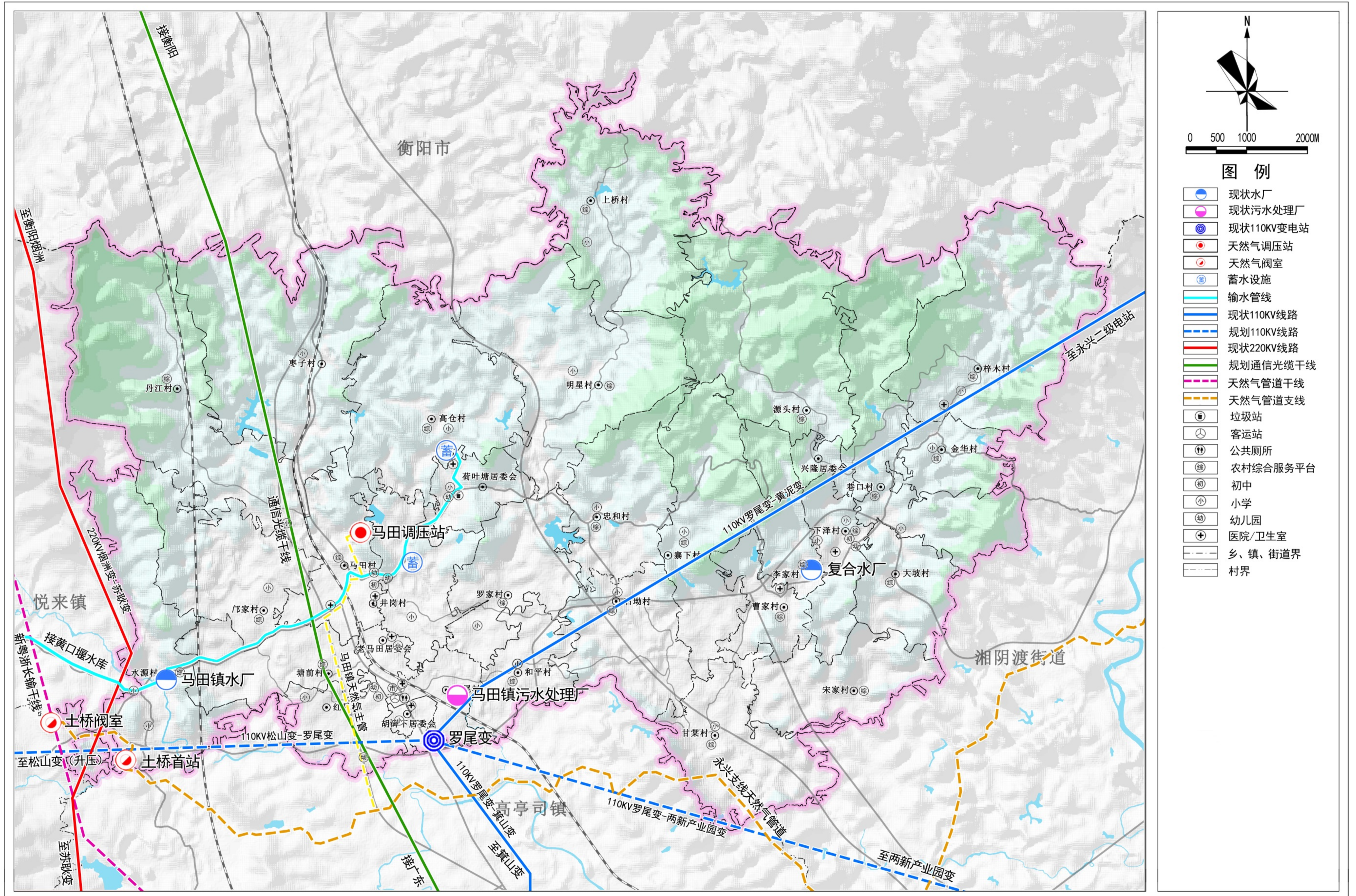
- 城镇开发边界
- 永久基本农田
- 生态保护红线
- 陆地水域
- 乡镇政府
- 村点
- 乡、镇、街道界
- 村界

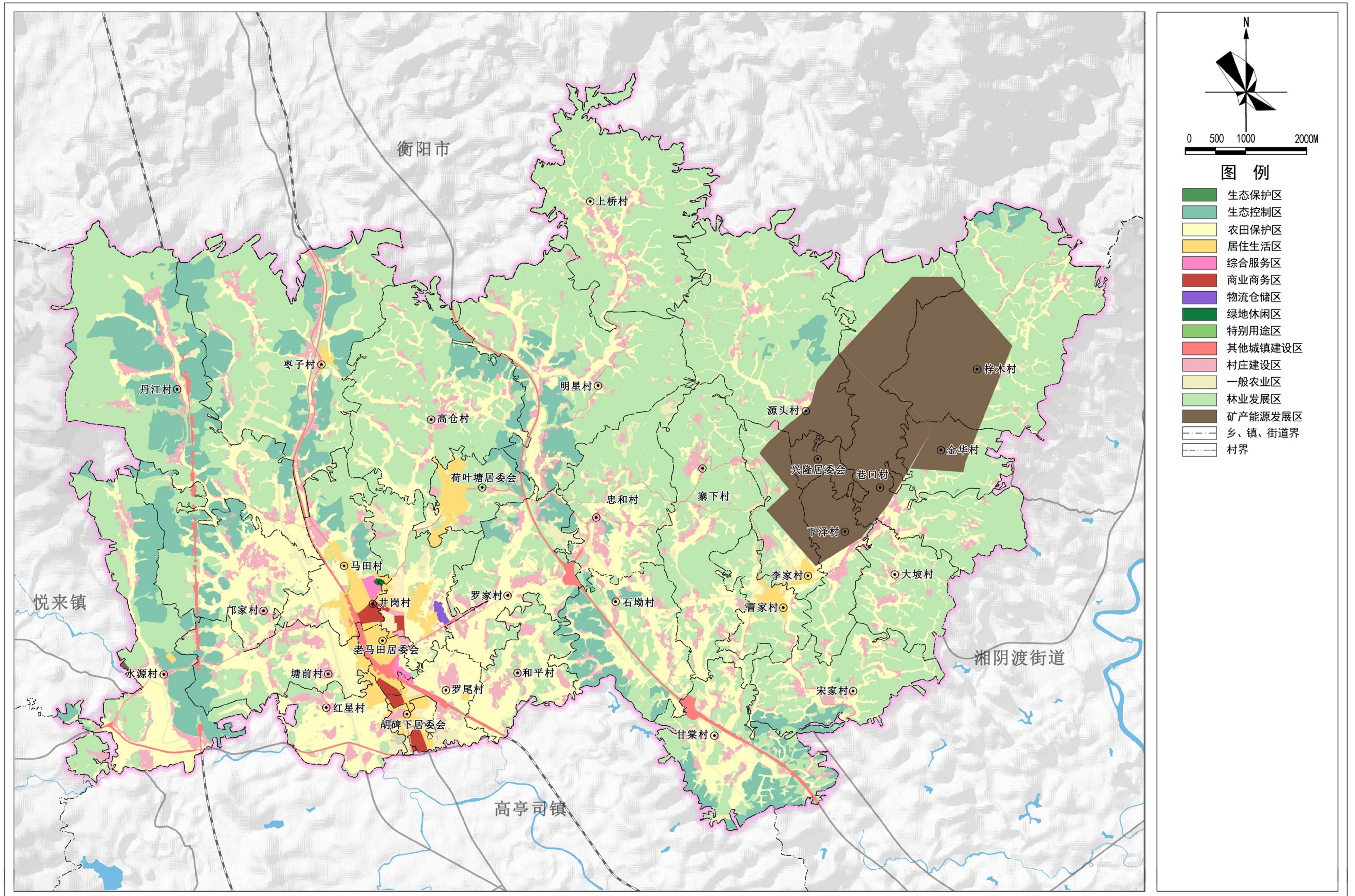


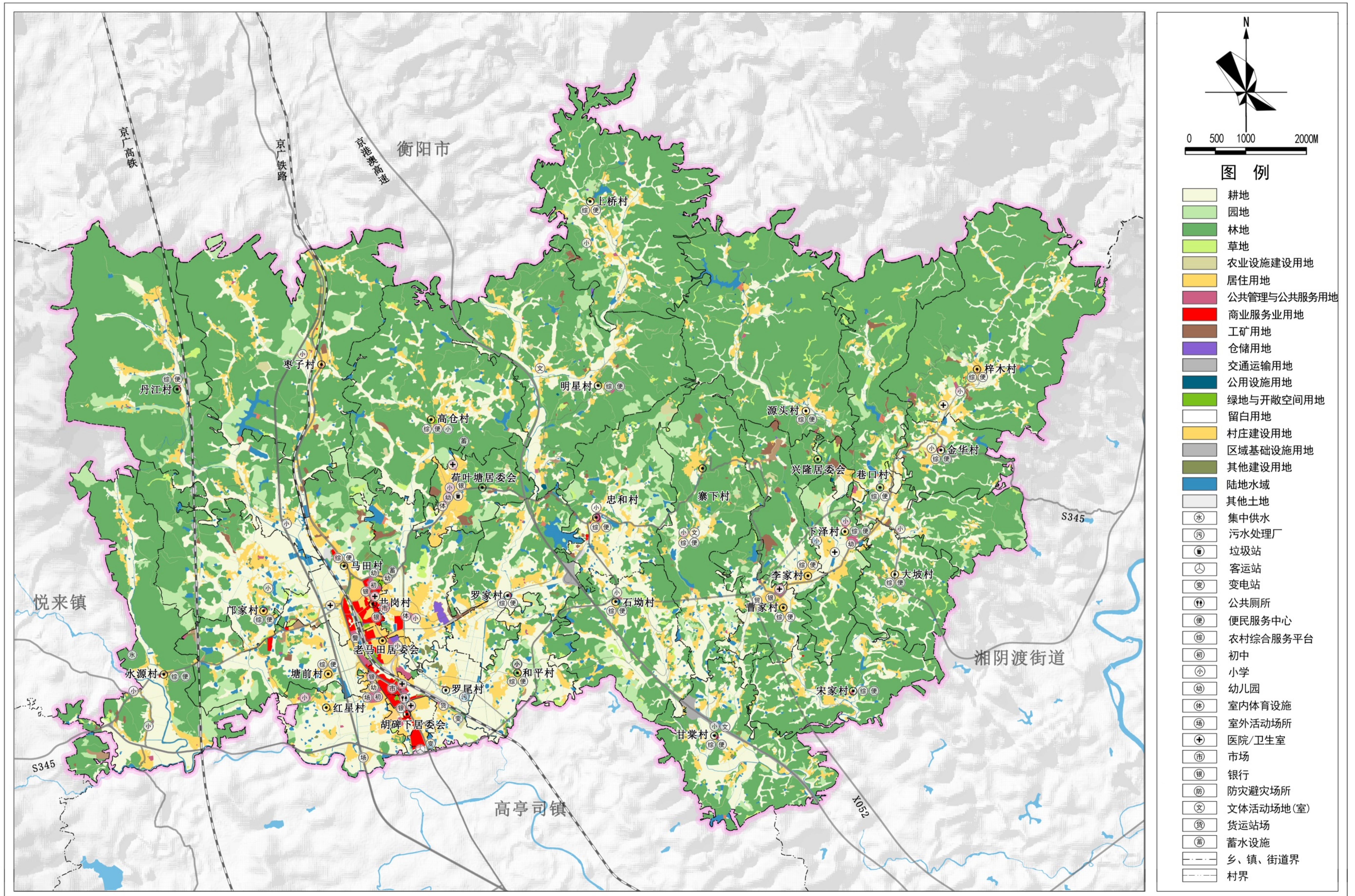


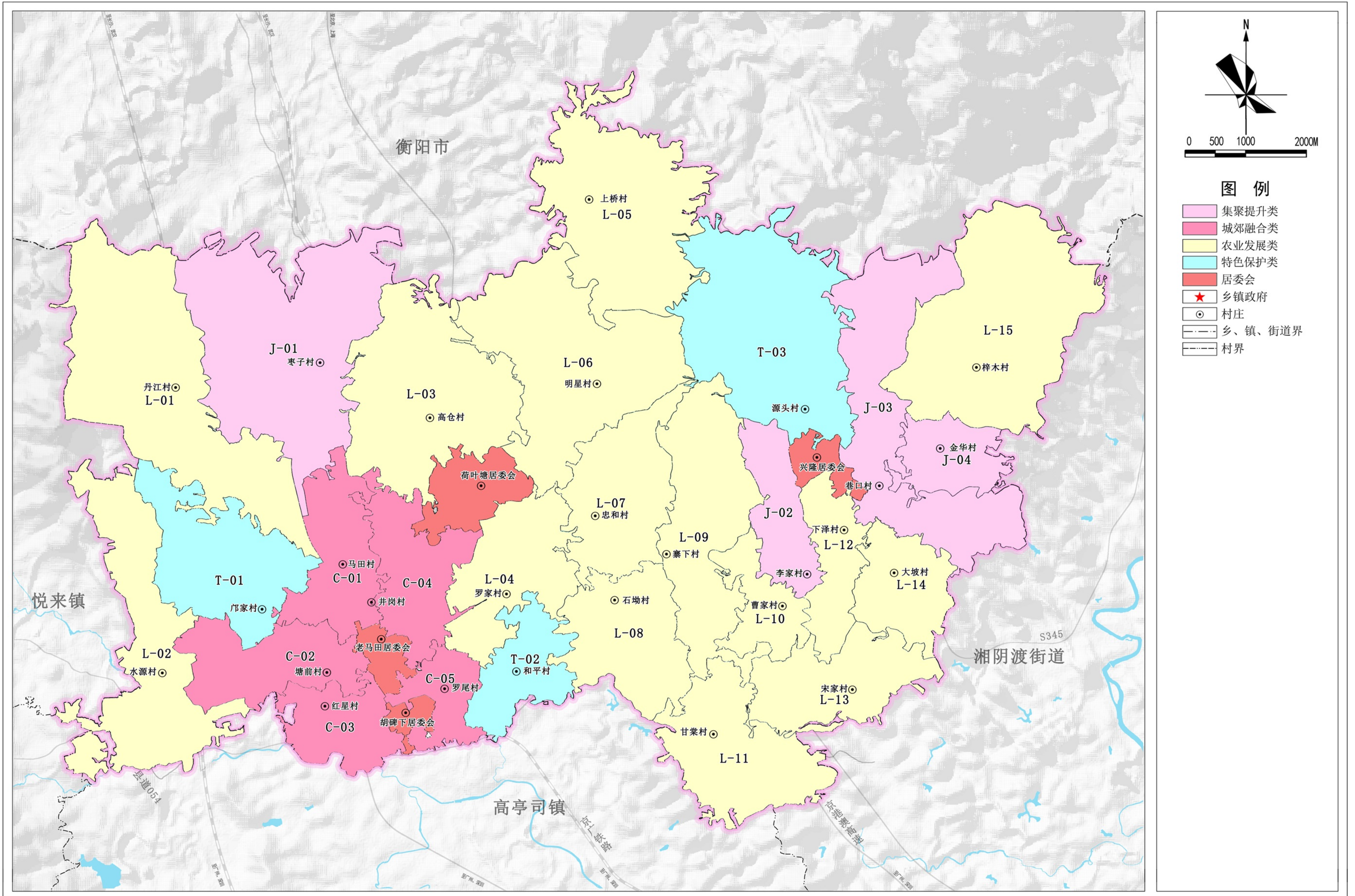






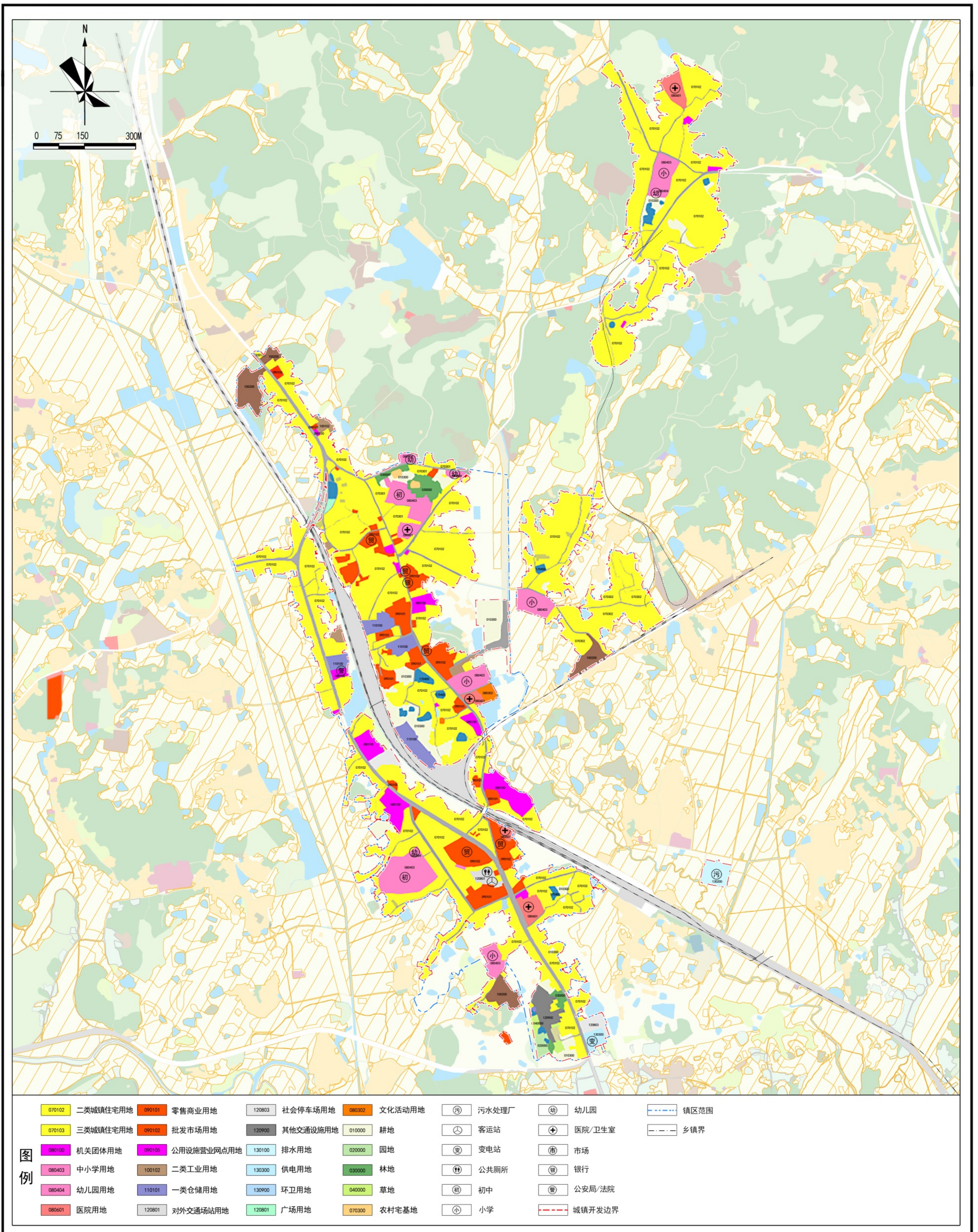






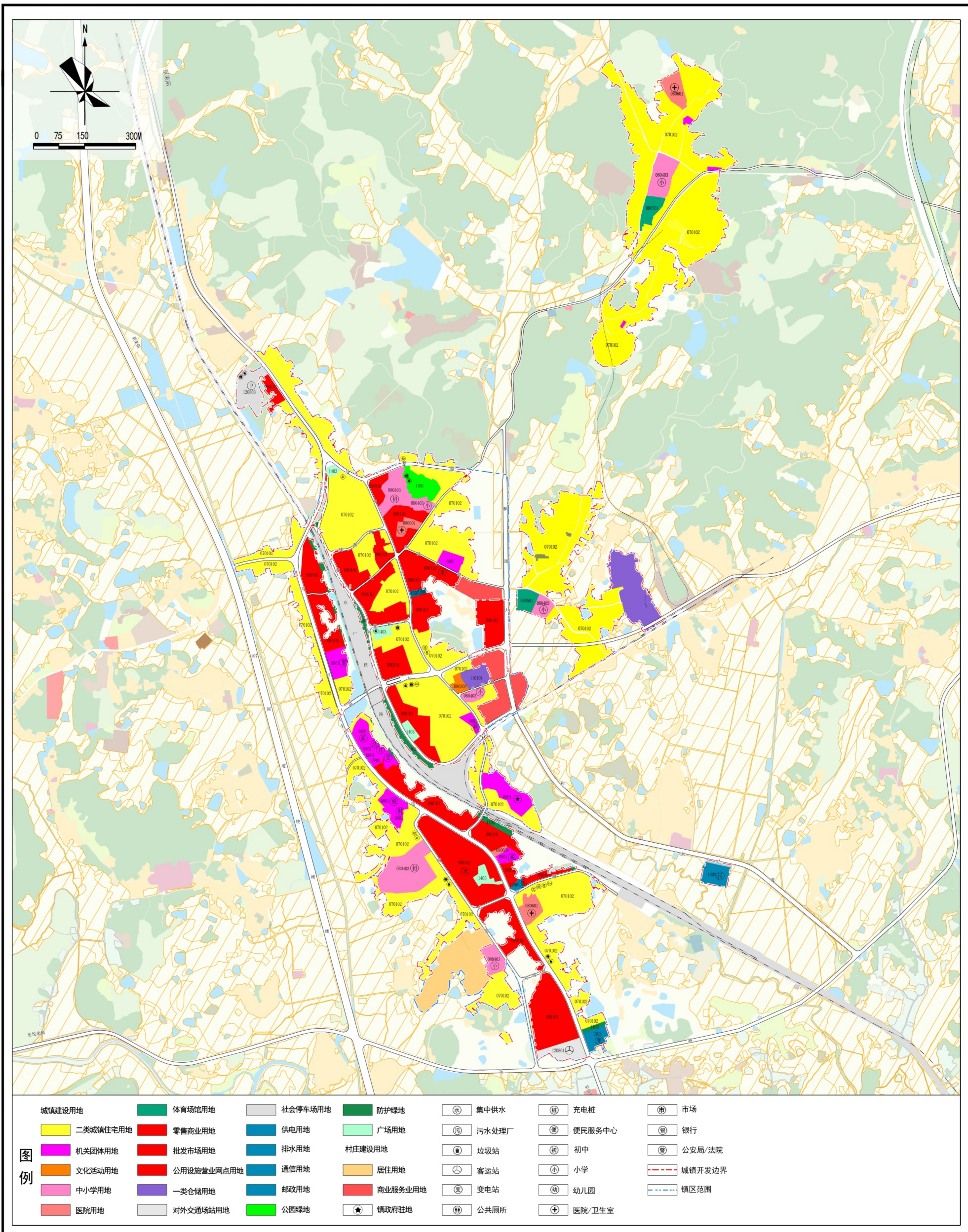
永兴县马田镇国土空间规划（2021-2035年）

图16 乡镇政府驻地国土空间用地现状图



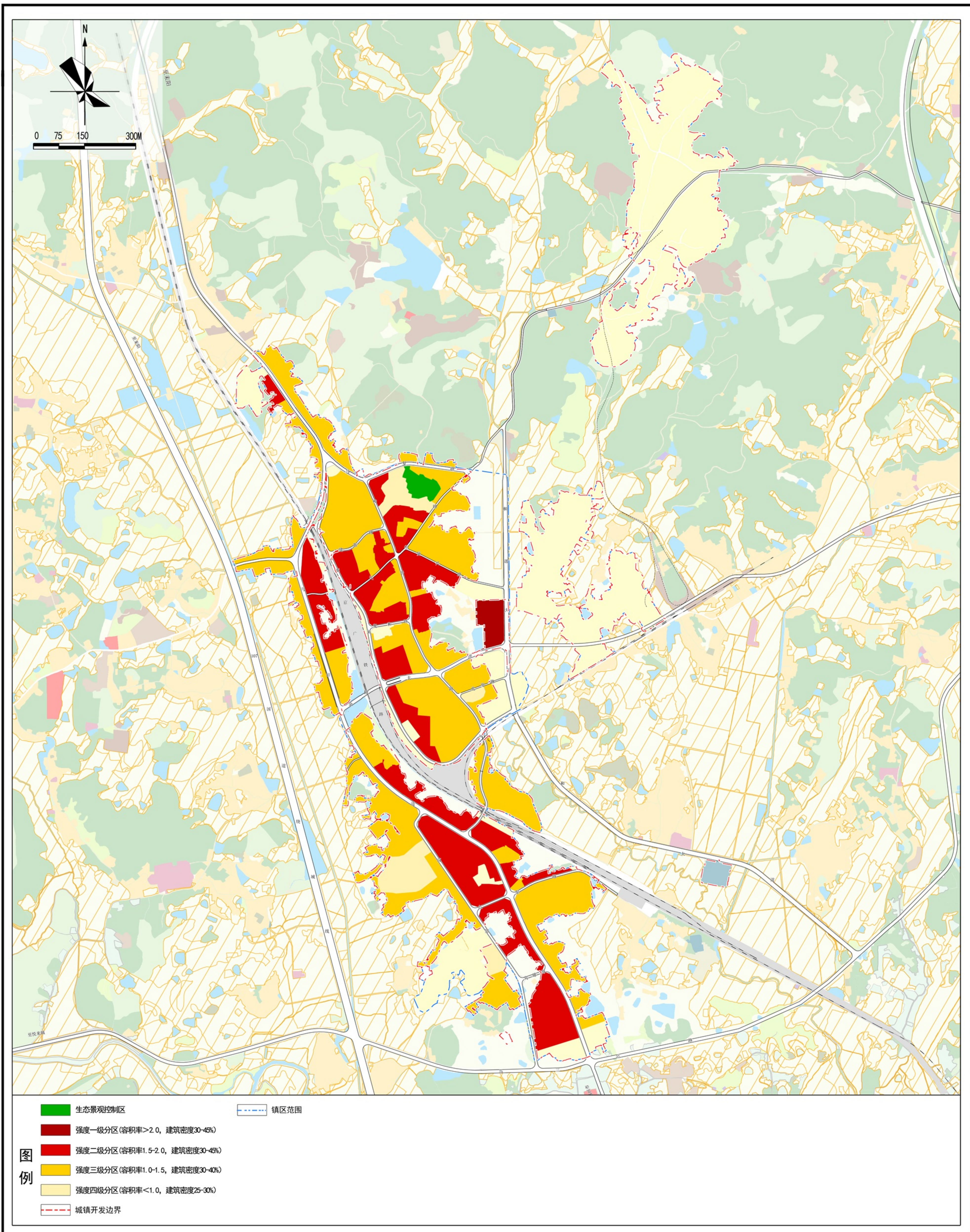
永兴县马田镇国土空间规划（2021-2035年）

图17 乡镇政府驻地国土空间规划图



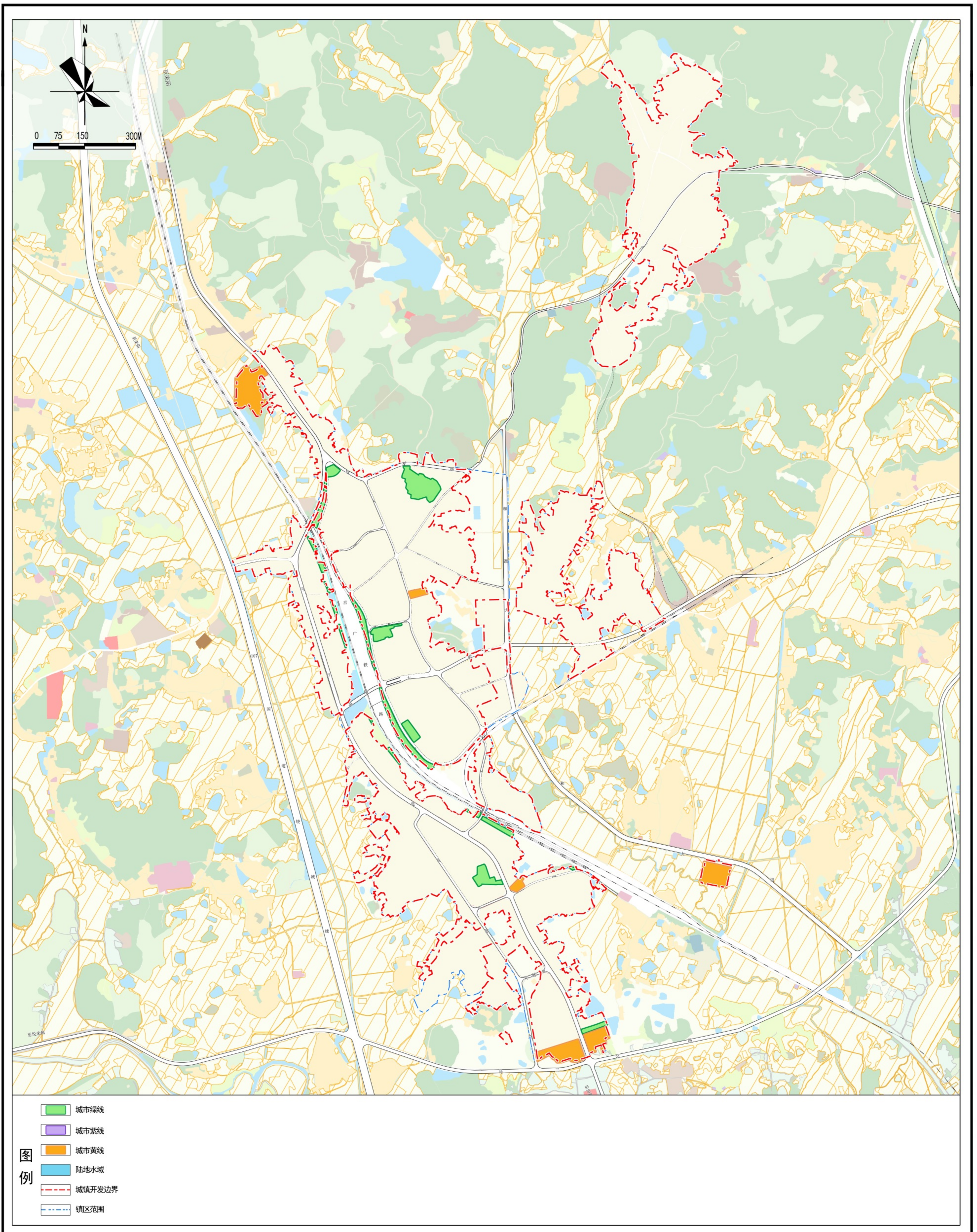
永兴县马田镇国土空间规划（2021-2035年）

图18 乡镇政府驻地开发强度分区规划图



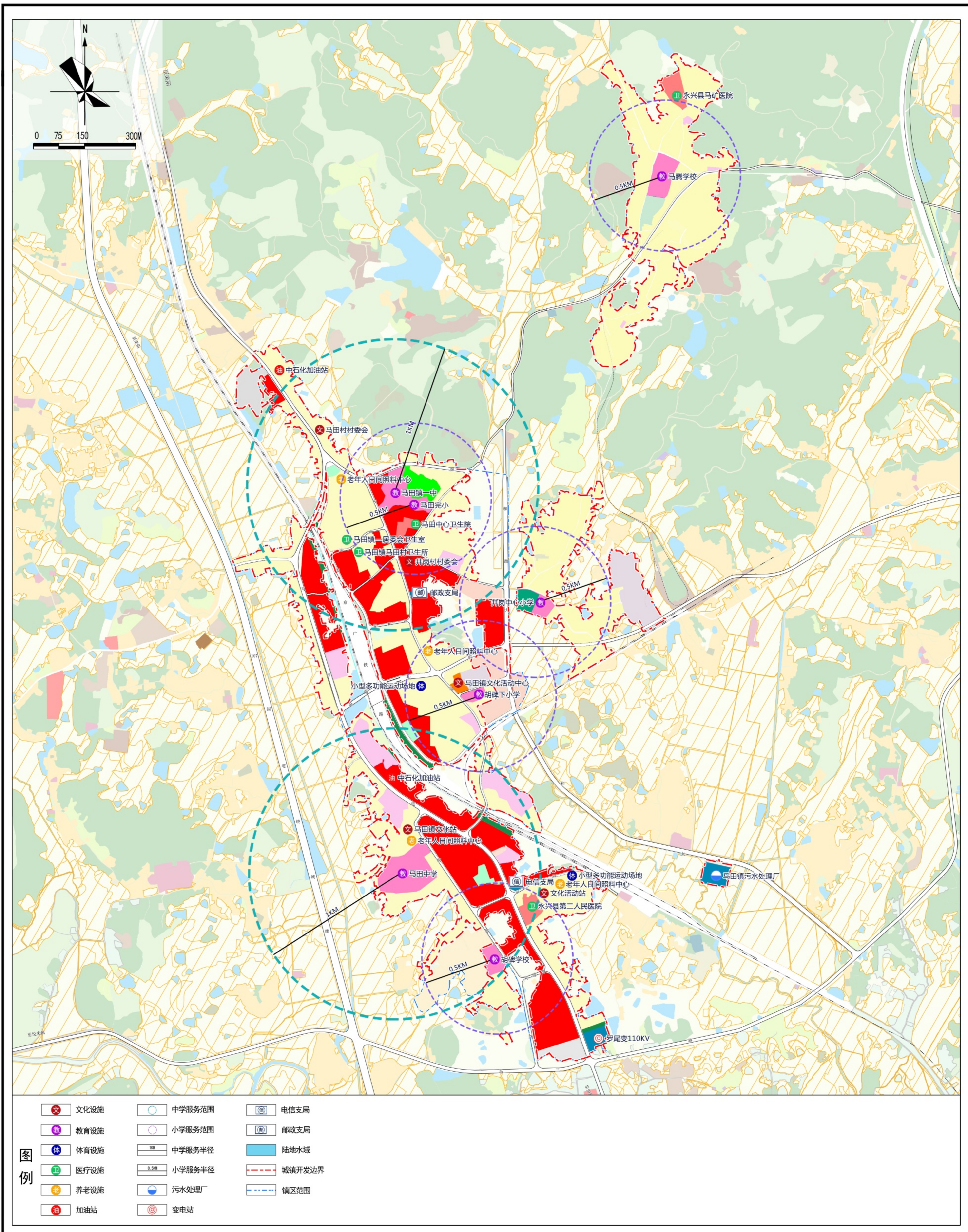
永兴县马田镇国土空间规划（2021-2035年）

图19 乡镇政府驻地控制线规划图



永兴县马田镇国土空间规划（2021-2035年）

图20 乡镇政府驻地公共服务设施体系规划图



永兴县马田镇国土空间规划（2021-2035年）

图22-1 乡镇政府驻地道路交通规划图

